



*AGR Butterfly Valve*

*AGR Rotary Valve*

## BUTTERFLY ROTARY VALVES



# Butterfly & Rotary Valves

AGIERRE produces a wide range of sanitary valves for handling the flow of powders, granules, and tablets, mainly in the chemical, pharmaceutical, and food industries. They are essentially made of two stainless steel AISI 316L semi-bodies connected with a clamp or screw.

## Sanitary Valve Types:

**Butterfly Valve:** designed to accurately control the material flow or isolate specific sections within a pipeline or system.

**Rotary Valve:** designed to continuously feed and dose the product into other machines or a pipeline.

## Sanitary Valve Configurations:

- **WRC model:** it has a welded connection on the superior and inferior parts (bins, hoppers, containers) to reduce the number of connections and contamination areas. The inferior part has a flange clamp for easy connection with the other systems.

- **WRW model:** it has a welded connection on the superior and inferior parts.

**WRTC model:** it connects to the Ferrule Tri-Clamp on the superior part and a welded connection on the inferior part.

The following models have the flange clamp connection on the superior and inferior parts for easy attachment to the other systems.

- **CC model:** the two semi-bodies are connected with a screw.

- **CRC model:** the two semi-bodies are connected with a clamp.

**CRTC model:** the two semi-bodies are connected with a clamp and have a Ferrule Tri Clamp on the superior part.

## Gaskets

The valves can be equipped with different types of seals, carefully selected to match the specific production requirements of each customer, which guarantees safe and precise material flow control, mitigating the risk of contamination and maintaining product integrity.

The gaskets can be manufactured in:

- EPDM   - Viton (FKM)   - Kalfon (FFKM)   - Teflon (PTFE)

### Configurations

### AGR Butterfly Valves

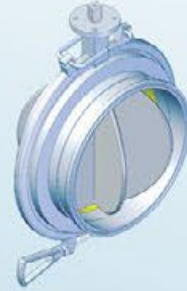
### AGR Rotary Valves



WRC



WRTC



SW

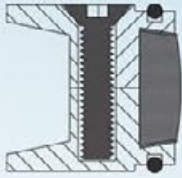


# Butterfly & Rotary Valves

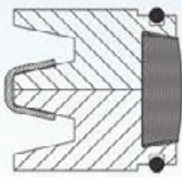
## Configurations

## AGR Butterfly Valves

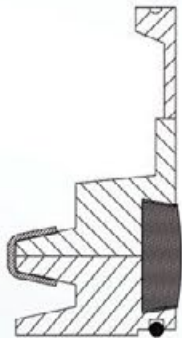
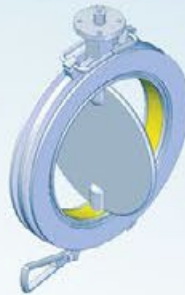
## AGR Rotary Valves



CC



CRC



CRTC

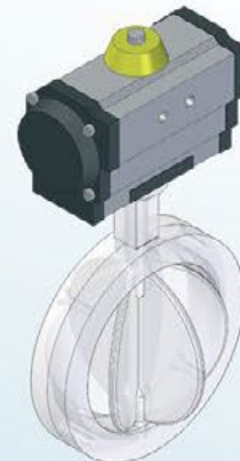


## Manual and Pneumatic Control

Manual (lever-operated)



Automated (operated by a pneumatic actuator)



Butterfly Valves support both manual and automatic control versions, while Rotovalves can be powered only by a pneumatic actuator. The handle is made from stainless steel AISI 304 and has a bakelite shaft.